



*LED Lighting Solutions for
Residential and Commercial Applications*

How to Use Flexible LED Strip for Residential and Commercial Lighting

Volume 1, Issue 1
2010

Contents

Introduction.....	3
Whats Needed for Flexible LED Strip Installations.....	3
Getting Started	3
DC Coaxial Connectors for Flexible LED Strip.....	4
Solderless Connectors for Flexible LED Strip	4
Using the Mounting Sleeve to Protect Your LEDs.....	5

Copyright 2010 by LED Distributors.

<http://www.leddistributors.net>

All rights reserved. No part of this publication may be reproduced in any form, print, electronic, or otherwise, without the express permission of LED Distributors.

Introduction

Flexible LED strips offer the ability to light many different projects. They are flexible, durable and energy efficient. You can use them for cove lighting, Under Cabinet, Under Counter, Light Displays and other projects.

Whats Needed for Flexible LED Strip Installations

1 - Our flexible LED strips operate on 12 volts DC. The total capacity of the power supply is dependent on the length of Flexible LEDs that you are using. For example, a sixteen foot piece of Flex strip will draw 2.8 amps of current. So you would use a 4 amp power supply.

2 - You will need Flexible LEDs in the length that your project requires. Single color LEDs on a Flexible strip come in a variety of colors.

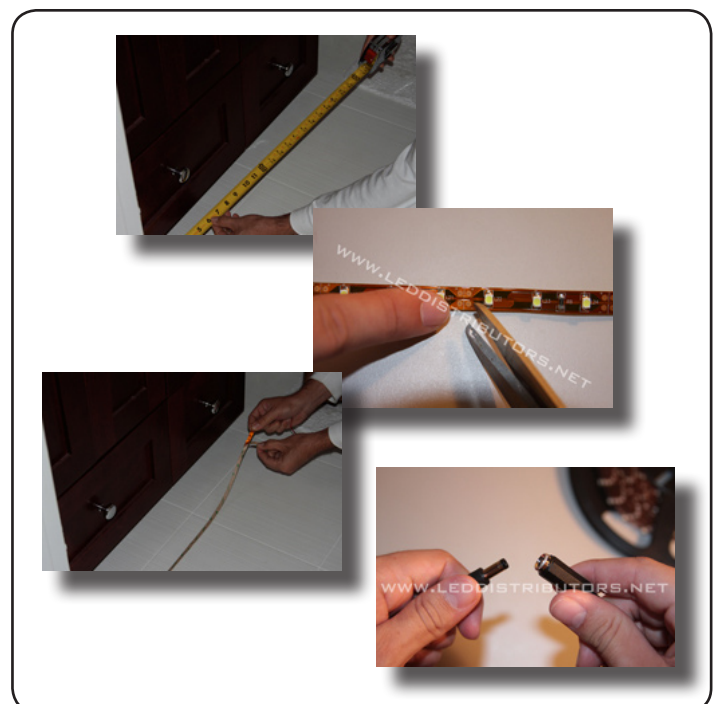
3 - Finally you will need a way of connecting the Flexible LEDs to the power supply. The end of the power supply has a Male DC Coaxial connector. You can use a Female DC Coaxial connector to plug into the power supply & a solderless connector.

Getting Started

1 - Measure the space where you will install the flexible LED's and cut to desired length. You will find cut lines about every two inches on regular flex strip, four inches on color changing and every one inch on our HID Super Bright Flexible LED Strip. Cut along the line.

2 - Connect the Red wire to power (+) and the Black wire to ground (-) or use our easy connect DC Coaxial Jack.

3 - Peel off adhesive backing and attach. Plug power supply into wall.



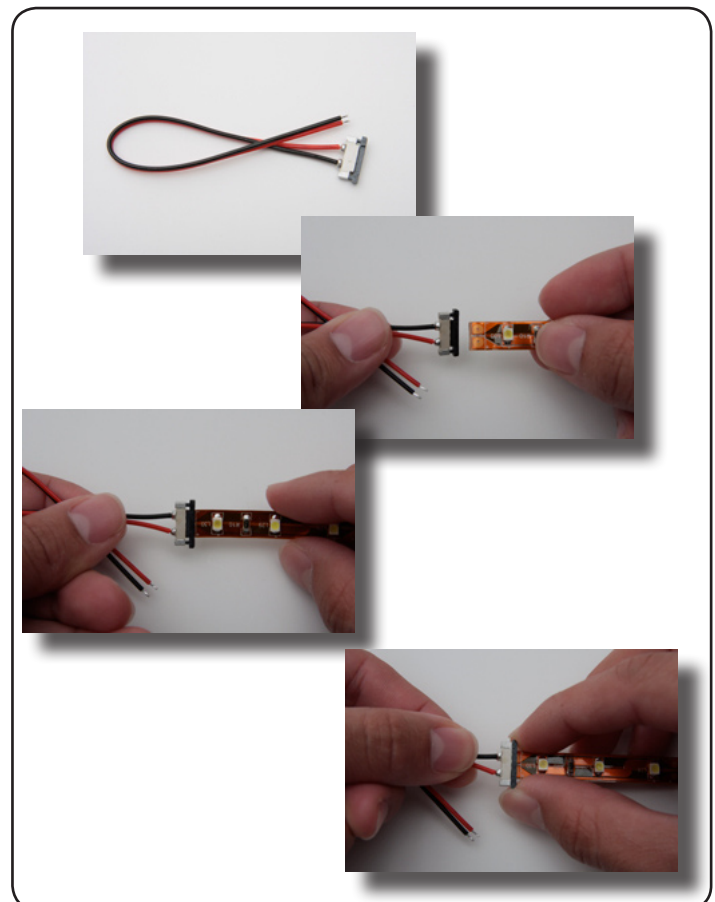
DC Coaxial Connectors for Flexible LED Strip

- 1 - The Flexible LED Strip can be easily connected to the power supply by using a DC Coaxial connector.
- 2 - First solder the red lead wire on the DC Coaxial connector to the positive (+) copper circle on the flexible LED strip.
- 3 - Next solder the white lead wire to the negative (-) copper circle on the flexible LED strip.
4. Push the male end of the DC Coaxial connector from the power supply into the female DC Coaxial connector. Now you are ready to plug the power supply into the wall jack.



Solderless Connectors for Flexible LED Strip

- 1 - If you do not want to solder then you can use our solderless connectors to make your connection. Our solderless connectors can be used to connect to the DC Coaxial connector or directly to a 12 volt source.
- 2 - First, find the top of the connector by looking at the black locking device. Notice the space where the strip goes in. It is in the shape of a square "U". The top of the connector is the top of the "U".
- 3 - First pull the black locking device on connector in the direction away from the wires. Be gentle, as pulling too hard can break the locking device off.
- 4 - Peel back the adhesive liner on the back side of the strip about 1/4". Slide Flexible LED Strip into connector. (This step is optional)
- 5 - Push locking device to secure the flexible LED strip in place. You are now ready to connect to your power supply or to another piece of flexible LED Strip.



Using the Mounting Sleeve to Protect Your LEDs

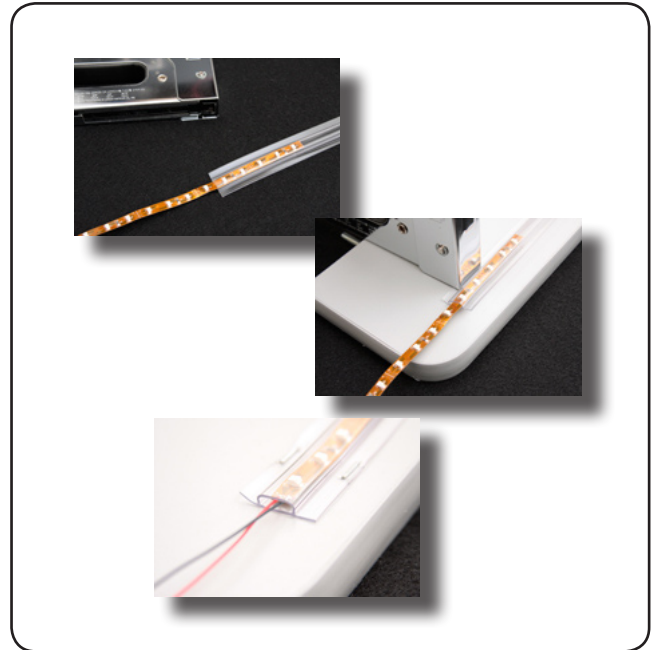
1 - Our mounting sleeve can make your LED under cabinet installation easy. First measure and Cut to correct length.

2 - Use screws, nails or staples to attach to surface. You can also use double sided tape or hook and loop.

** You can slide Flexible LED Strip into mounting sleeve before attaching to surface.

3 - Slide Flexible LED Strip into sleeve. This step can be done before you attach mounting sleeve to surface.

Note: When you have runs of 6 feet or more of flexible LEDs, you will have difficulty sliding the Flexible LED Strip through the mounting sleeve. Use fish tape to make this easier.



LIMITED WARRANTY

All products are warranted one year from the purchase date.

Warranty is void when products are used in applications that they are not intended for.

LIMITATION OF LIABILITY: LED Distributors, SHALL NOT BE LIABLE TO PAY INCIDENTAL, CONSEQUENTIAL, SPECIAL, AND EXEMPLARY OR PUNITIVE DAMAGES. CUSTOMER'S EXCLUSIVE REMEDY FOR CLAIMS IS LIMITED TO CUSTOMER HAVING THE OPTION OF REPLACEMENT OR REPAYMENT OF THE PURCHASE PRICE PAID FOR THE GOODS WHICH ARE THE SUBJECT OF THE CLAIM.

LED Distributors, will repair or replace damaged or defective products.

A copy of the invoice is required for warranty repairs or replacements at the time of service.

To obtain service under this warranty, the defective system or components must be returned to LED Distributors, with proof of purchase, installation date, failure date and supporting installation data.

The customer is responsible for return shipping. LED Distributors, reserves the right to change prices without notice when necessary. All prices on product list are quoted in U.S. Dollars.

(714) 930-3398
www.leddistributors.net